

HARRY CHARLES

Property Specialists



Lorane Court, Watford, WD17 4LZ

£1,595 Per month

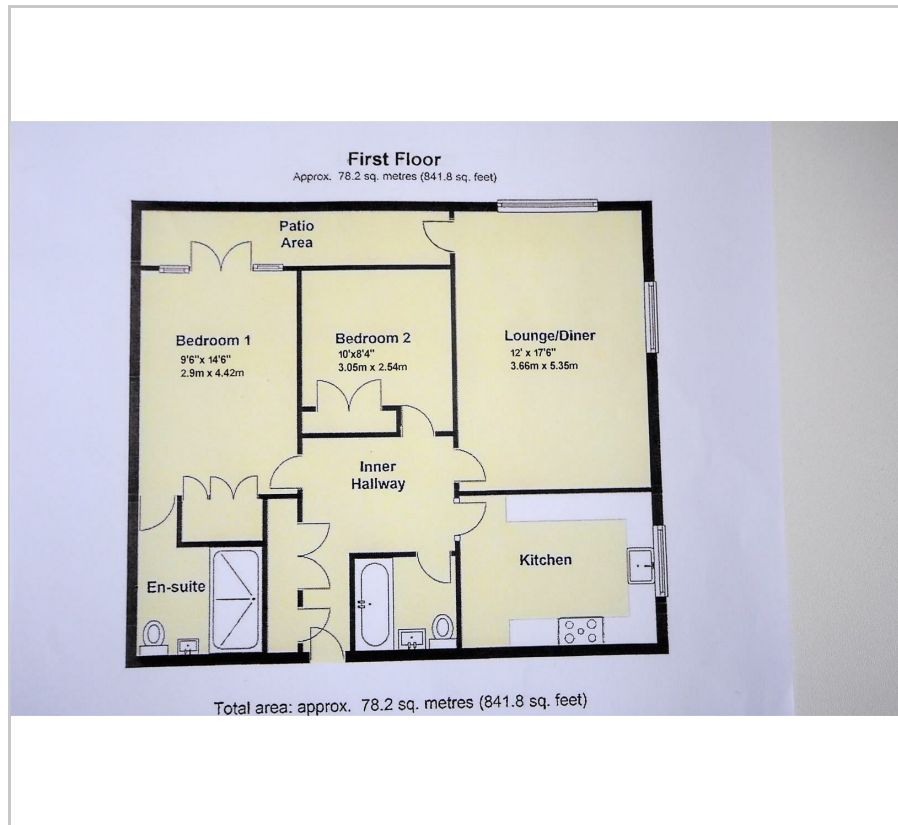


**** FIRST FLOOR APARTMENT WITH BALCONY ACCESSED FROM BOTH THE LOUNGE/DINER AND MASTER BEDROOM - SPACIOUS LOUNGE/DINER - MASTER BEDROOM WITH EN-SUITE SHOWER ROOM - FURTHER DOUBLE BEDROOM - RE-FITTED KITCHEN -RE-FITTED BATHROOM- COMMUNAL OFF ROAD PARKING - AVAILABLE 14TH MARCH **** We are delighted to offer for let on an unfurnished basis this two double bedroom first floor apartment situated in this popular Nascot Wood location. The apartment comprises of an entrance hall with storage cupboards, lounge/diner, re-fitted kitchen, master bedroom with a built in wardrobe and an en-suite shower room, further bedroom with built in wardrobe and a re-fitted family bathroom. Externally there is a balcony with access from both the lounge and the master bedroom, attractive communal gardens to the front and there is communal off road parking. An internal viewing is required to appreciate the numerous benefits on offer so please contact us without delay to arrange this. We apologise but unfortunately pets are not permitted. Council Tax Band D

- First Floor Apartment
- Master Bedroom With En-Suite
- Further Double Bedroom
- Communal Parking
- Available 14th March 2026
- Lounge/Diner With Balcony
- Re-fitted Kitchen
- Re-fitted Family Bathroom
- Attractive Communal Gardens
- Council Tax Band D



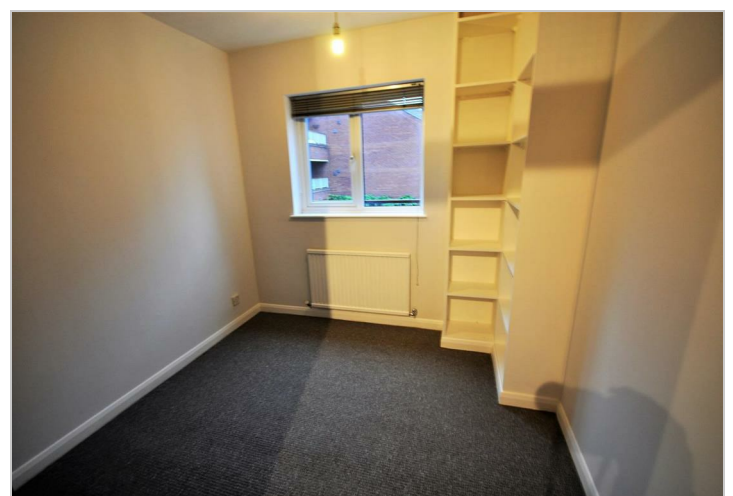
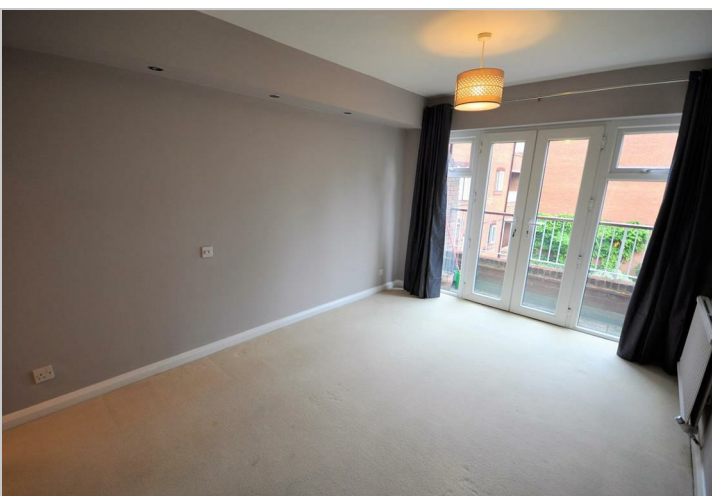
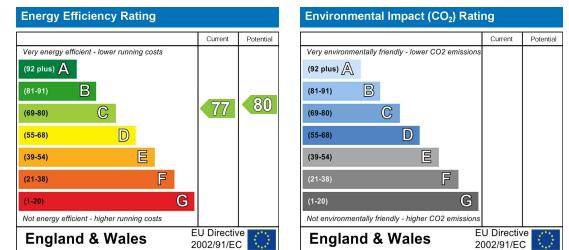
Floor Plan



Area Map



Energy Efficiency Graph



These particulars, whilst believed to be accurate are set out as a general outline only for guidance and do not constitute any part of an offer or contract. Intending purchasers should not rely on them as statements of representation of fact, but must satisfy themselves by inspection or otherwise as to their accuracy. No person in this firm's employment has the authority to make or give any representation or warranty in respect of the property.